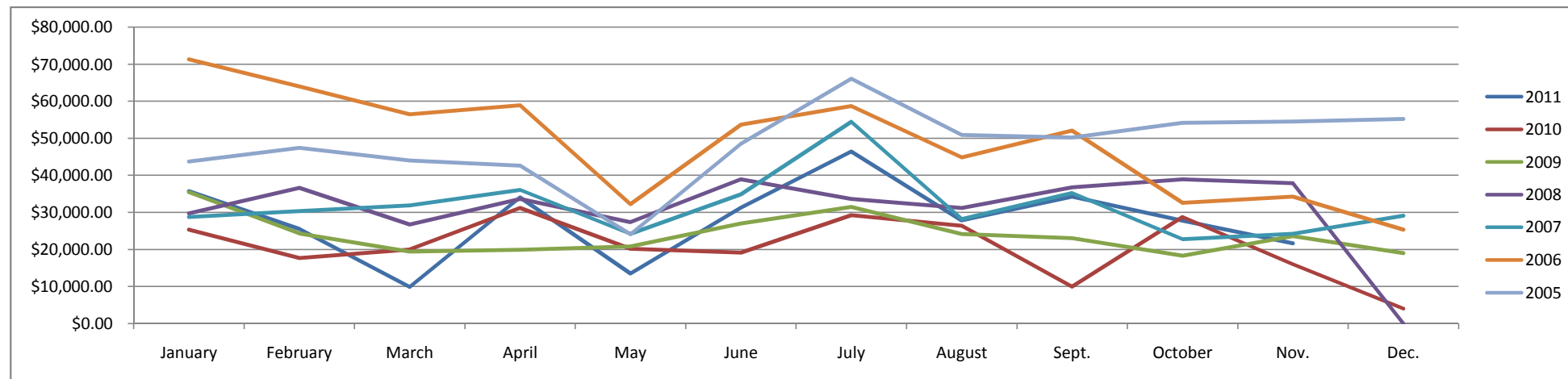
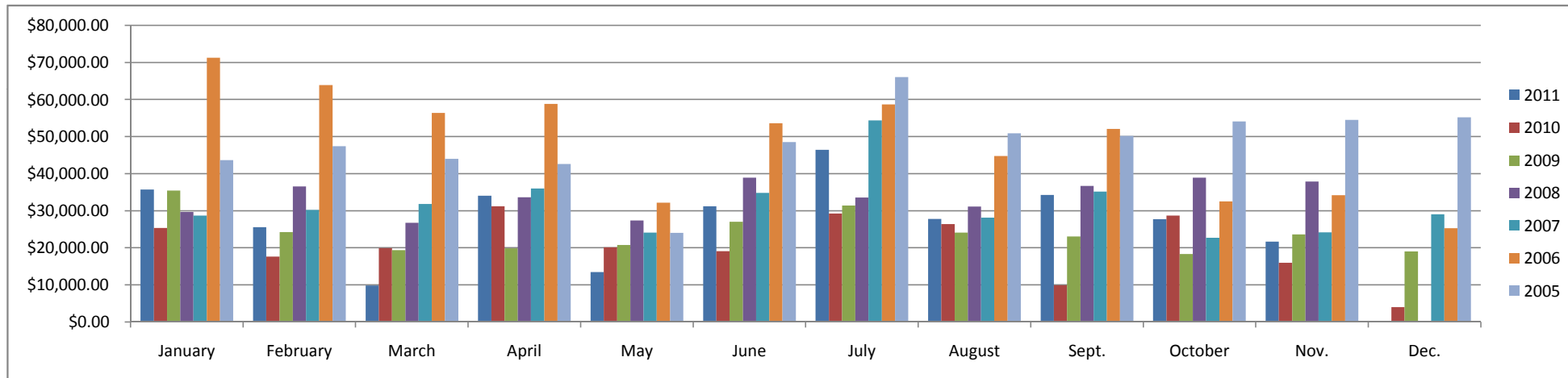


## District 2 Maintenance & Operations

	January	February	March	April	May	June	July	August	Sept.	October	Nov.	Dec.	Sum	Average
<b>2011</b>	\$35,761.44	\$25,571.21	\$9,873.68	\$34,084.55	\$13,505.62	\$31,252.01	\$46,465.38	\$27,839.81	\$34,286.95	\$27,781.41	\$21,670.78		\$308,092.84	\$28,008.44
<b>2010</b>	\$25,399.39	\$17,698.24	\$19,972.58	\$31,218.49	\$20,181.11	\$19,157.63	\$29,301.73	\$26,415.84	\$9,973.11	\$28,764.98	\$16,021.16	\$4,060.21	\$248,164.47	\$20,680.37
<b>2009</b>	\$35,451.45	\$24,296.25	\$19,438.34	\$19,930.00	\$20,832.15	\$27,036.69	\$31,472.54	\$24,157.31	\$23,080.58	\$18,332.05	\$23,648.18	\$19,033.54	\$286,709.08	\$23,892.42
<b>2008</b>	\$29,737.59	\$36,625.16	\$26,780.56	\$33,658.52	\$27,386.74	\$38,921.88	\$33,631.88	\$31,187.25	\$36,758.69	\$38,939.62	\$37,880.52	\$0.00	\$371,508.41	\$30,959.03
<b>2007</b>	\$28,727.94	\$30,291.44	\$31,838.93	\$36,056.09	\$24,171.69	\$34,866.10	\$54,418.58	\$28,195.70	\$35,217.55	\$22,734.18	\$24,213.56	\$29,094.78	\$379,826.54	\$31,652.21
<b>2006</b>	\$71,272.31	\$63,954.54	\$56,445.93	\$58,851.68	\$32,238.65	\$53,632.02	\$58,685.91	\$44,831.69	\$52,089.07	\$32,550.68	\$34,214.92	\$25,332.98	\$584,100.38	\$48,675.03
<b>2005</b>	\$43,692.97	\$47,417.13	\$44,016.03	\$42,636.57	\$24,070.01	\$48,537.75	\$66,095.38	\$50,915.84	\$50,218.16	\$54,147.26	\$54,559.53	\$55,217.54	\$581,524.17	\$48,460.35



## Highway Funds for Logan County

	January	February	March	April	May	June	July	August	Sept.	October	Nov.	Dec.	Sum	Average
<b>2011</b>	\$297,784.31	\$250,713.65	\$190,721.03	\$282,253.65	\$190,816.87	\$268,956.02	\$310,696.14	\$254,819.43	\$274,160.86	\$254,644.24	\$230,312.35		\$2,805,878.55	\$255,079.87
<b>2010</b>	\$247,198.17	\$212,694.72	\$203,917.74	\$298,855.46	\$225,993.34	\$245,772.90	\$282,095.18	\$252,437.53	\$210,969.35	\$275,744.94	\$237,513.46	\$177,030.64	\$2,870,223.43	\$239,185.29
<b>2009</b>	\$285,051.89	\$238,488.74	\$204,415.02	\$244,249.96	\$211,596.45	\$230,210.07	\$228,217.62	\$237,771.95	\$231,241.74	\$216,996.14	\$238,344.55	\$218,500.63	\$2,785,084.76	\$232,090.40
<b>2008</b>	\$251,853.60	\$273,896.41	\$245,995.44	\$265,484.30	\$244,279.94	\$280,510.67	\$277,387.64	\$275,038.63	\$295,768.71	\$309,273.24	\$300,569.45	\$179,355.63	\$3,199,413.66	\$266,617.81
<b>2007</b>	\$243,305.80	\$251,708.02	\$252,961.93	\$265,476.64	\$242,181.98	\$266,927.77	\$328,922.99	\$252,983.26	\$281,601.09	\$233,861.77	\$236,635.82	\$251,718.56	\$3,108,285.63	\$259,023.80
<b>2006</b>	\$345,653.97	\$319,099.50	\$295,413.01	\$311,834.95	\$263,844.33	\$295,053.70	\$308,788.35	\$272,024.25	\$299,650.05	\$247,478.50	\$255,883.03	\$232,596.15	\$3,447,319.79	\$287,276.65
<b>2005</b>	\$266,539.33	\$273,871.07	\$261,880.22	\$270,935.55	\$265,520.54	\$284,346.21	\$339,733.06	\$286,485.30	\$278,606.19	\$287,846.26	\$288,831.31	\$292,799.82	\$3,397,394.86	\$283,116.24

