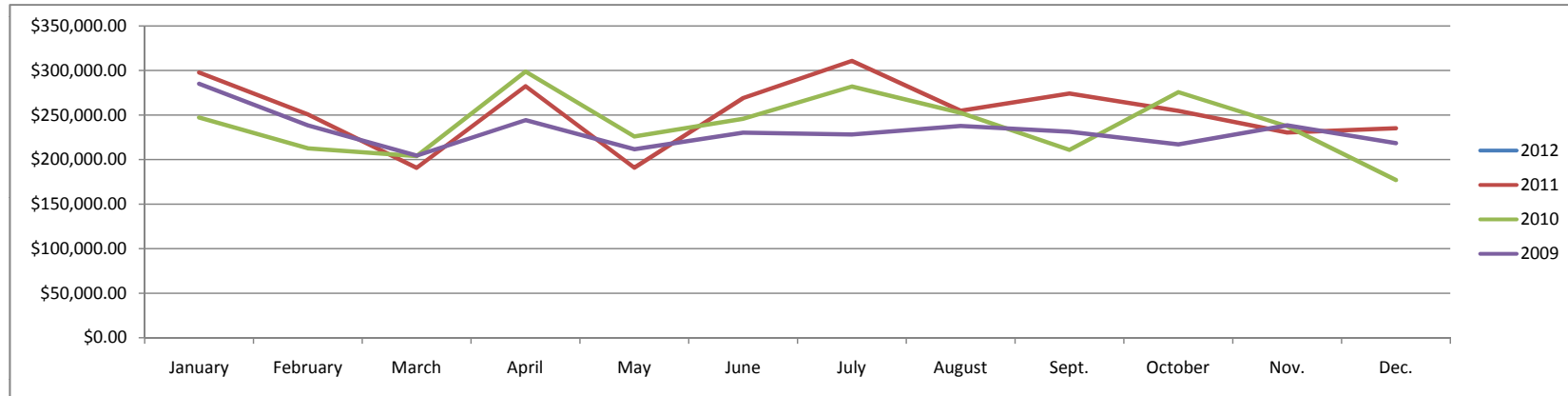


Highway Funds for Logan County

	January	February	March	April	May	June	July	August	Sept.	October	Nov.	Dec.	Sum	Average
2012	\$252,650.90												\$252,650.90	\$252,650.90
2011	\$297,784.31	\$250,713.65	\$190,721.03	\$282,253.65	\$190,816.87	\$268,956.02	\$310,696.14	\$254,819.43	\$274,160.86	\$254,644.24	\$230,312.35	\$235,089.13	\$3,040,967.68	\$253,413.97
2010	\$247,198.17	\$212,694.72	\$203,917.74	\$298,855.46	\$225,993.34	\$245,772.90	\$282,095.18	\$252,437.53	\$210,969.35	\$275,744.94	\$237,513.46	\$177,030.64	\$2,870,223.43	\$239,185.29
2009	\$285,051.89	\$238,488.74	\$204,415.02	\$244,249.96	\$211,596.45	\$230,210.07	\$228,217.62	\$237,771.95	\$231,241.74	\$216,996.14	\$238,344.55	\$218,500.63	\$2,785,084.76	\$232,090.40



District 2 Maintenance & Operations

	January	February	March	April	May	June	July	August	Sept.	October	Nov.	Dec.	Sum	Average
2012	\$29,116.97												\$29,116.97	\$29,116.97
2011	\$35,761.44	\$25,571.21	\$9,873.68	\$34,084.55	\$13,505.62	\$31,252.01	\$46,465.38	\$27,839.81	\$34,286.95	\$27,781.41	\$21,670.78	\$23,263.04	\$331,355.88	\$27,612.99
2010	\$25,399.39	\$17,698.24	\$19,972.58	\$31,218.49	\$20,181.11	\$19,157.63	\$29,301.73	\$26,415.84	\$9,973.11	\$28,764.98	\$16,021.16	\$4,060.21	\$248,164.47	\$20,680.37
2009	\$35,451.45	\$24,296.25	\$19,438.34	\$19,930.00	\$20,832.15	\$27,036.69	\$31,472.54	\$24,157.31	\$23,080.58	\$18,332.05	\$23,648.18	\$19,033.54	\$286,709.08	\$23,892.42

